

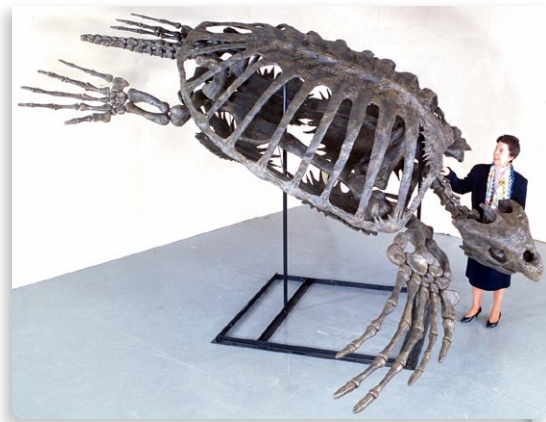
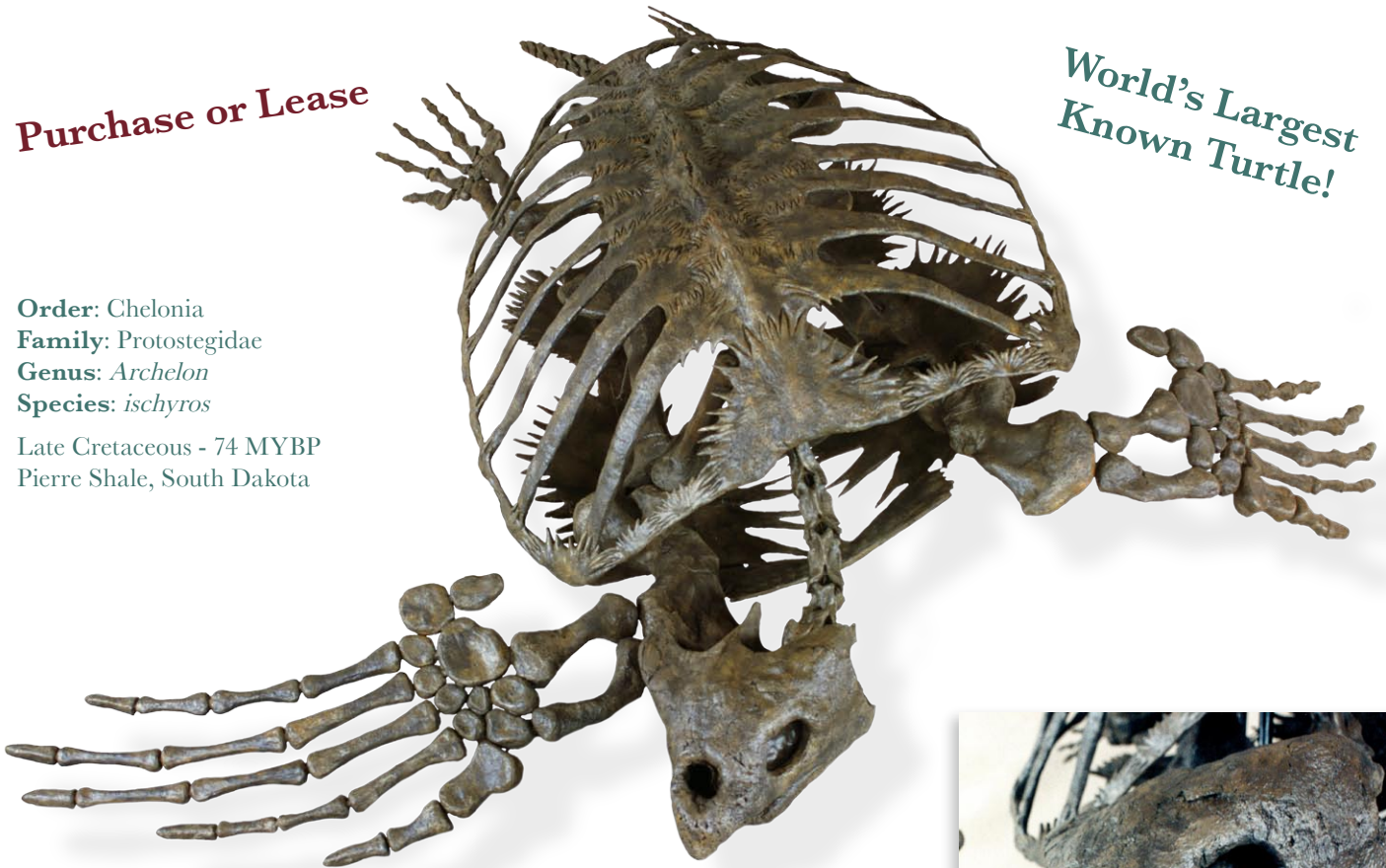
Archelon ischyros

Fossil Replica

Purchase or Lease

**World's Largest
Known Turtle!**

Order: Chelonia
Family: Protostegidae
Genus: *Archelon*
Species: *ischyros*
 Late Cretaceous - 74 MYBP
 Pierre Shale, South Dakota



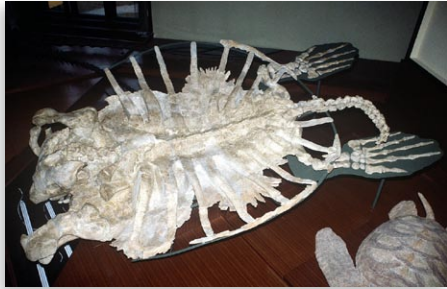
Archelon shared its watery domain with ammonites, mosasaurs, huge fishes, and other extinct marine animals. The live weight of this *Archelon* is estimated to have been more than 4500 pounds! Young and old alike, even those who have seen large dinosaur and mammal mounts, are awed at the size of the *Archelon*. It makes a perfect emissary to greet guests at any marine museum or large aquarium, and would be equally exciting in an exhibit of contemporary species.

Details on Back

Archelon ischyros

Fossil Replica

Specimen Background



The original fossil specimen, of this largest of the world's turtles, was collected from the Pierre Shale of South Dakota in the mid 1970's - the most complete *Archelon* collected to date. Some initial preparation and stabilization of the specimen was done at that time by Peter Larson of BHI for Siber & Siber of Zurich, Switzerland. The specimen was eventually purchased by the National Natural History Museum in Vienna, Austria, where it is a centerpiece exhibit.

Dr. Kraig Derstler of the University of New Orleans, who has studied this *Archelon* extensively, reports: "Without exaggeration, the Vienna museum specimen of *Archelon ischyros* is one of the world's great fossils."

Replica Details

Our replica skeleton can be mounted in steep diving or more horizontal swimming poses, on a single steel support post, or hung from 3 cables. The skeleton is mounted on a strong steel infrastructure in easy-to-assemble sections. Bones are cast in durable urethane and hand painted in realistic colors.

Some helpful exhibit-building information:

- *Archelon* had a hooked beak and probably had a very powerful bite. Its beak and mouth seem especially well designed for eating large molluscs, like squid, that inhabited the seas of the Late Cretaceous.
- This *Archelon ischyros* lived an estimated 100 years and probably died while brumating (hibernating), partially buried in the mud of the sea floor.



Overall Size

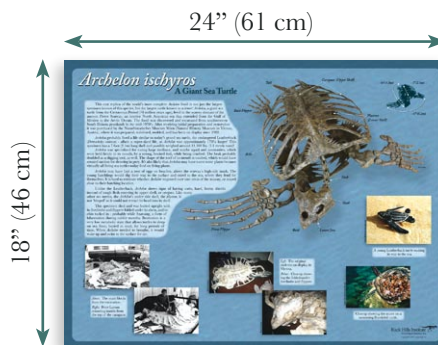
Our replica measures nearly 17' (5.2 m) from flipper tip to flipper tip and about 15' (4.5 m) long from beak to end of tail. The carapace (shell) is nearly the size of a Volkswagen Beetle!



Related Items



Skull available as separate display.
Metal base included.



Informational posters complement the replica with history and insight. Media can be individually licensed for use in your own compositions.



Optional metal display stand for poster.