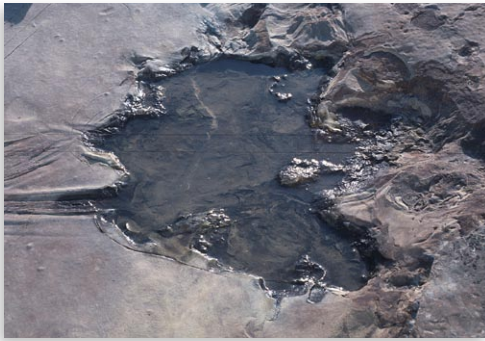


# Zerbst Trackway

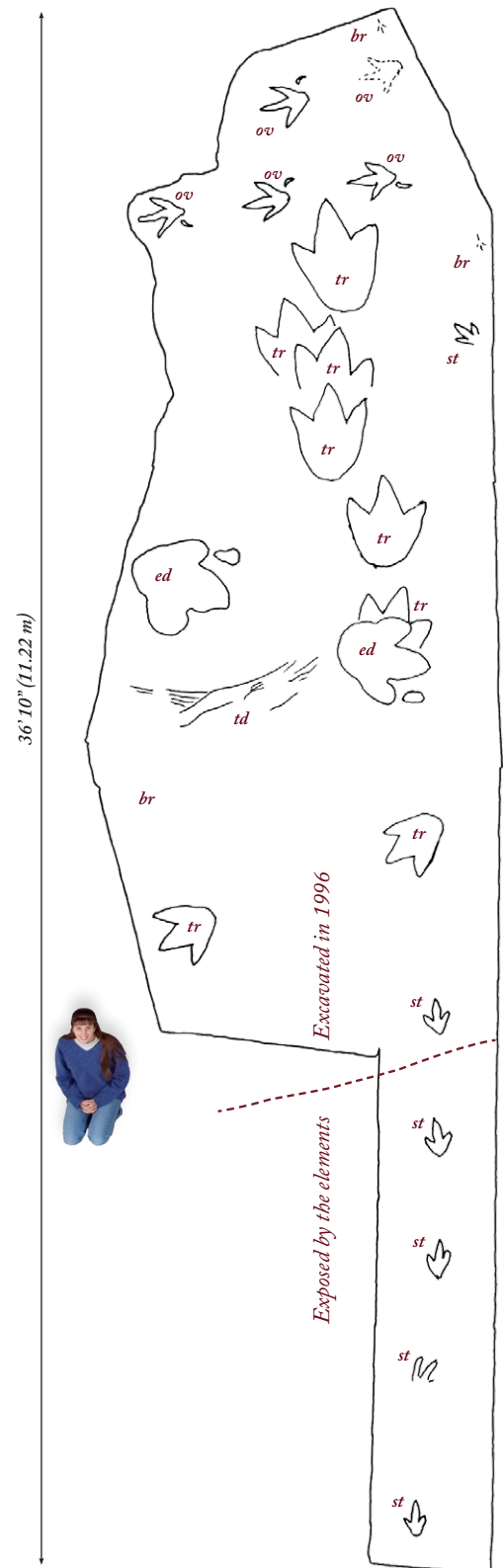
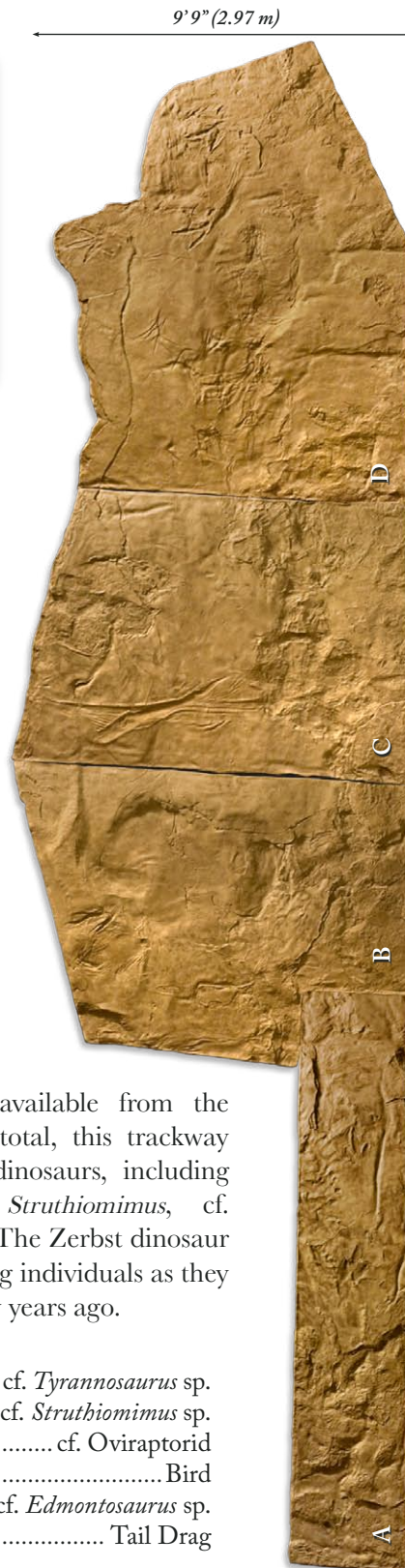
Fossil Replica



Maastrichtian - Late Cretaceous  
 ~ 65 - 67 MYBP  
 Lance Formation  
 Niobrara County, Wyoming

**The only** dinosaur trackway cast available from the Maastrichtian in North America. In total, this trackway preserves footprints from at least 4 dinosaurs, including *Tyrannosaurus rex*, *Edmontosaurus*, *Struthiomimus*, cf. Oviraptorid, and several taxa of birds. The Zerbst dinosaur trackway preserves the evidence of living individuals as they moved through their environment many years ago.

*tr*.....cf. *Tyrannosaurus* sp.  
*st*.....cf. *Struthiomimus* sp.  
*ov*.....cf. Oviraptorid  
*br*.....Bird  
*ed*.....cf. *Edmontosaurus* sp.  
*td*.....Tail Drag



Details on Back

# Zerbst Trackway

Fossil Replica

## Specimen Background

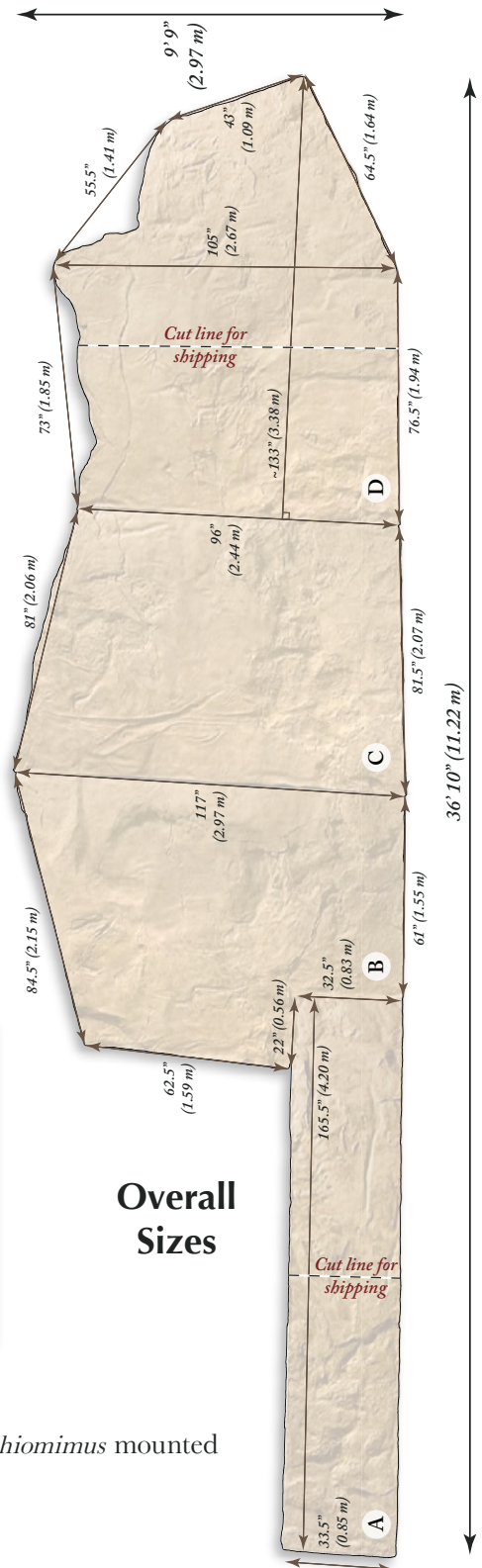
In 1996 Leonard Zerbst excavated a trackway from the Late Cretaceous Lance Formation of Niobrara County, Wyoming. The trackway was molded in situ in 2001 by Black Hills Institute staff. Probably the most important Maastrichtian age trackway for North America, this site preserves the footprints of at least three taxa of avian theropods, three non-avian theropods, and one ornithischian.

## Replica Details

Cast in sections, which can be purchased and/or displayed individually or as a whole. Replica is composed of a foam resin with an internal steel support structure, which can facilitate a wall mount or floor display.



Photos from the trackway site.



## Related Items

Complementary cast replicas available - *Tyrannosaurus rex* mounted foot, *Struthiomimus* mounted foot, *Edmontosaurus* mounted foot. Whole skeletons also available.

**Trackways can be purchased or rented.**